

DATA ANALYSIS SOFTWARE

Kett

SCIENCE OF SENSING

Tracker™ System



Kett

Tomorrow's Testing, Today !
1-800-438-5388

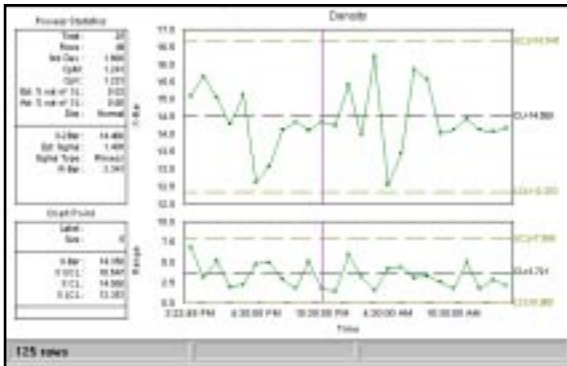
Data Analysis Software

Why Collect Measurement Data?

Information is the lifeblood of process control and improvement. Understanding historical performance trends, cyclical rhythms, periodic failures, and the impact of changes in component, process, and environmental conditions permit the prediction of product quality as well as providing documentation of existing quality.

Data Analysis Software is developed to obtain easy assessment of these subtle yet important values.

As a pioneer in the field of test equipment, Kett has traditionally developed software for the tracking and analysis of values gained through the use of our instrumentation.



With the introduction of the Tracker™ Software Family, Kett provides a consistent analysis interface for all Kett devices. In addition, the integration of input from non-Kett measurement devices provides the customer with a concise, yet comprehensive tool to manage this ever-increasing requirement for data collection.

Who Can Use Data Analysis Software?

The vast number of users that need this program may be surprising:

- R&D Laboratories
- Manufacturing
- Plant Management
- Regulatory Groups
- Process Engineers
- QA/QC
- Maintenance
- Corporate Management

The list is virtually endless. Do you need a single interface or focal point for data collection and analysis? If so, Kett Tracker™ is right for you.

Why Use Kett Tracker™ Software?

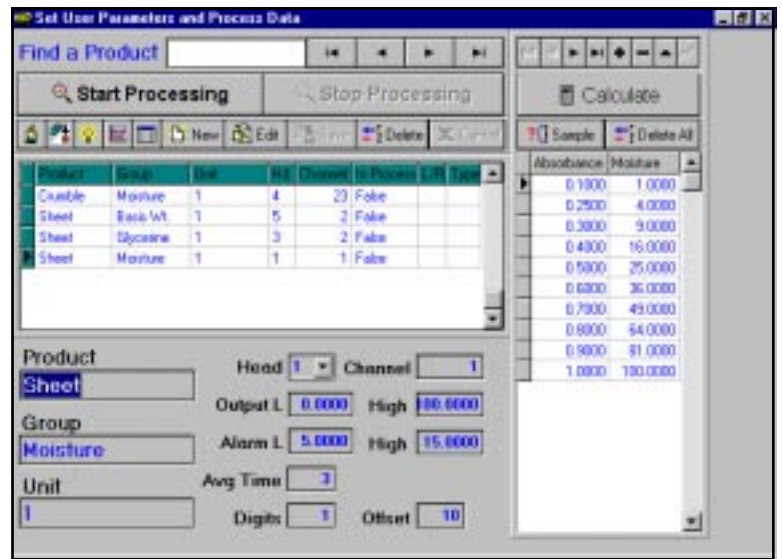
The selection of data collection and analysis software has important long-term ramifications. Software programs that are difficult to learn and use are very often ignored by the majority of company employees, while simple systems that do not provide comprehensive storage, analysis, and display capabilities do not meet the needs of the serious user. Therefore it is important to combine ease of use with substantial performance to provide a working tool for your company. In addition, the software program must provide a simple upgrade path for additional information collection points.

Kett Tracker™ allows anyone in your business to quickly and efficiently monitor, analyze, display, and report the information that they are empowered to manage. At the same time, the modular software design allows for additional inputs to be attached with minimal effort.

In addition, versions are available for most existing and planned platforms, such as Windows, Windows 95, Windows NT, and OS/2.

Powerful Simplicity

Installed in minutes and requiring minimal setup and training, Kett Tracker™ Software provides productive analysis and output the first day it is used.



Kett Tracker™ software modules are simple, economical tools that will aid many of your company's production processes. Virtually anyone can produce detailed measurement reports and consistent process control with minimal operator training.

Which Version Do You Need?

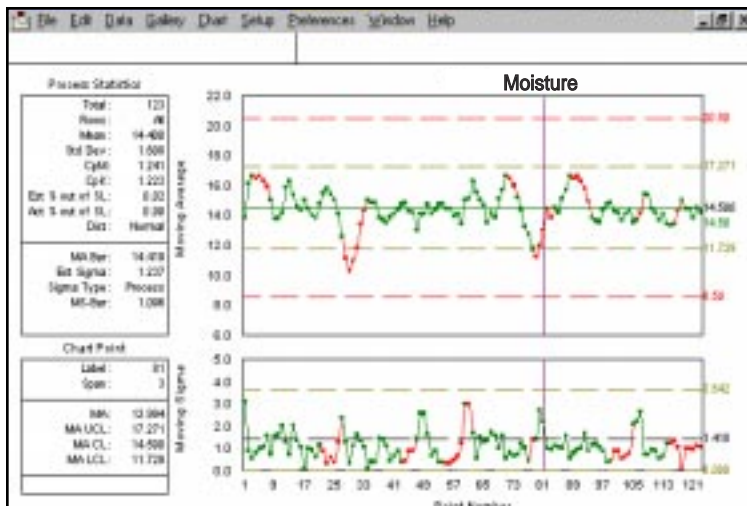
Kett offers a collection of programs to meet most requirements:

- **Single Kett Analyzer** - provides appropriate database, display, and output functions for a specific Kett model
- **Multiple Kett Analyzers** - Allows for the simultaneous collection, display, analysis and output of several similar or varied Kett devices
- **Positioning Module** - Provides location data for the measurement data when integrated with linear actuators or robotics
- **Additional Inputs** - Non-Kett device drivers, data collection tables, and graphs can be added upon customer request
- **Network Management** - Modules are available to provide distributed data management, allowing authorized users to view, analyze, manage, and output appropriate process control information

When needed, all versions can be updated as your requirements change, protecting your investment in software and personnel.

Moisture Track™

The cost-effective Moisture Track™ Software is used with Kett's Near-Infrared Moisture Meters and Composition Analyzers to provide real-time, non-contact evaluation of products and processes. When integrated with a PLC or DCS, this system allows automated, unattended control of complex manufacturing processes.



One-Point Control

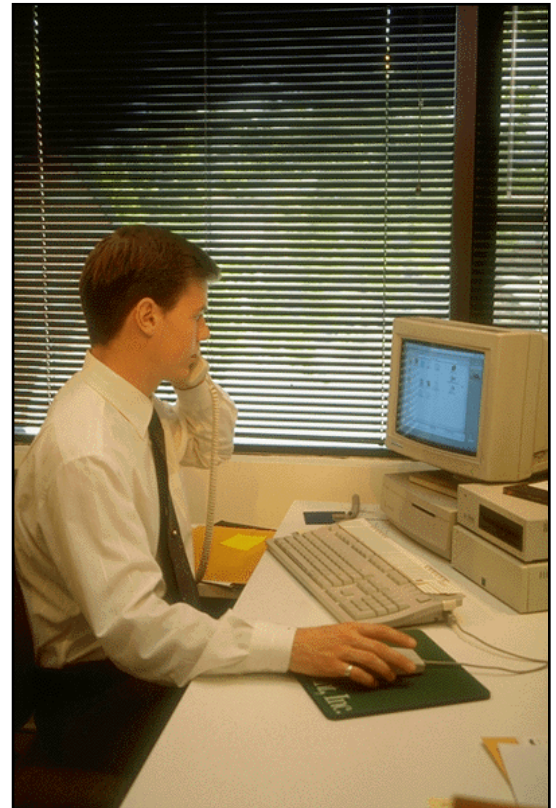
A single PC or workstation can control up to 256 inputs and outputs simultaneously. Consistent menus, displays and databases ensure simple control of all process variables

Easy Data Collection and Display

Data is automatically collected in both Paradox and DBase formats and displayed in several efficient, user-selected modes. Information can be transferred to internal systems for archiving or additional analysis if desired.

Net-Monitor™

Our premier offering. Net-Monitor™ will allow any authorized user to tap into the data collection system through your company's network. Net-Monitor™ provides management with constantly updated reports, while production employees receive continuous information regarding their control systems and measurement devices.



Unsurpassed Flexibility

Additional measurement locations can be added in seconds. New measurement devices can be added within minutes. Site licenses are available (with programming tool kits) to allow for on-site implementation of new equipment without the need to contact Kett.

Remote Control Operation

When connected with your control system, process changes can be implemented from anywhere on the network, even from a remote facility, with our dial-in access. Imagine the ability to access data, anywhere, anytime, in a colorful, descriptive display!

Additional Modules

Thick Track™

Used with Kett Coating Thickness Gauges - including our wireless versions.

TriboTrack™

For integration with our Heidon Surface Analyzers

Integrator™

For Non-Kett measurement devices.

Locator™

Provides real-time X,Y,Z positioning data and integration with the measurement data when the measurement device is attached to a robot or actuator.



Specifications

Model	Moisture Track™	TriboTrack™	Locator™
Operating Systems	Win/Win95/NT	Win/Win95/NT	Win/Win95/NT
PC Included	Y	Y	Y
Devices per Board	4	1	16
Boards per CPU	6	6	6
Refresh Rate	.5 Seconds	1 ms	.2 Seconds
Display			
Digital	Y	Y	Y
Statistical	Y Opt	NA Opt	Y Opt
Network Compatible	Novell/NT	Novell/NT	Novell/NT
Client/Server Version	Opt	NA	Opt
Dial-in Capability	Opt	Opt	Opt
Display	Color/B&W	Color/B&W	Color/B&W
Printer Compatible	Windows	Windows	Windows
Remote Control	Y	N	Y
Warranty	Tracker™ Software comes with a full one-year support program. All updates are complimentary for twelve months. Post warranty agreements are also available. Please call for information.		

Summary

By now, you have decided which Kett Tracker™ module is right for your initial use. Over fifty years of experience with testing equipment and measurements is assurance that our software will perform to your most stringent expectations. If you wish to place an order, or if you require additional guidance on module selection, please call Kett.

CALL TOLL FREE **(800)-GET-KETT**
(800)-438-5388

Tomorrow's Testing, Today!

Kett offers a complete line of innovative test and analysis equipment — for laboratory, field, and commercial applications. Quality and Process Control is our business! If your company requires quick, accurate measurements, get Kett!

ACCESSORIES AND OPTIONS

Personal Computers

Benchtop, laptop, and industrial processors and displays are available for your use.

Custom Programming Requirements

Available for all data collection and analysis requirements.



17853 Santiago Boulevard, Ste. 107-50#
Villa Park, CA 92861
714-974-8837 • 714-974-8877 (FAX)
www.Kett.com
1-800-438-5388
Sales, Support, Service